

# Climate Change Projections for the Mid-21<sup>st</sup> Century in the Crown of the Continent



Summary of a Climate Change Studies  
Internship with USDA Forest Service,  
Northern Region

Supervised By:

Jim Morrison,  
Regional Climate Change Coordinator

GIS Analyses and Presentation By:

Karin Mayn,  
Climate Change Studies Intern

Spring 2012



# Gridded Climate Datasets

- Forest Service Partnership with University of Washington's Climate Impacts Group (CIG)
- CIG Publicly Available Gridded Data
  - 5x5 km grid cell size
    - Historic (1916-2006)
    - Mid-Century Projection (2030-2059)
      - Ensemble Mean GCM (10-model average)
    - Change between Projected and Historic
- Crown of the Continent Variables Analyzed:

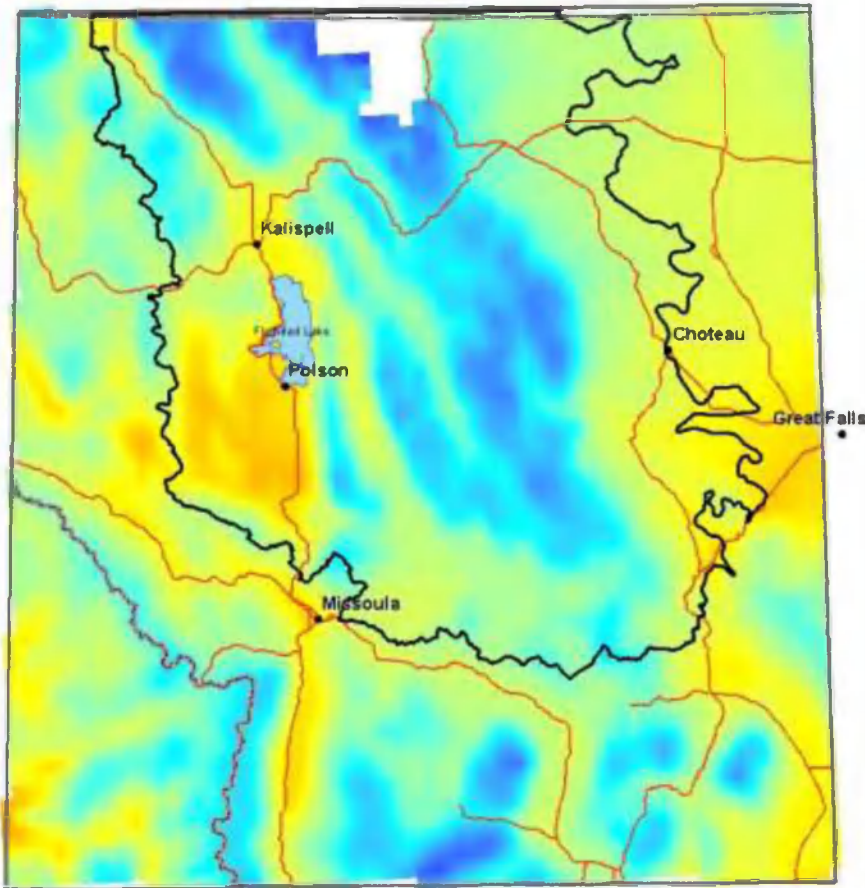


- Average Temp (Seasonal & Annual)
- Minimum Temp (Seasonal)
- Maximum Temp (Seasonal)
- Average Precip. (Seasonal & Annual)

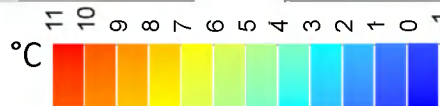
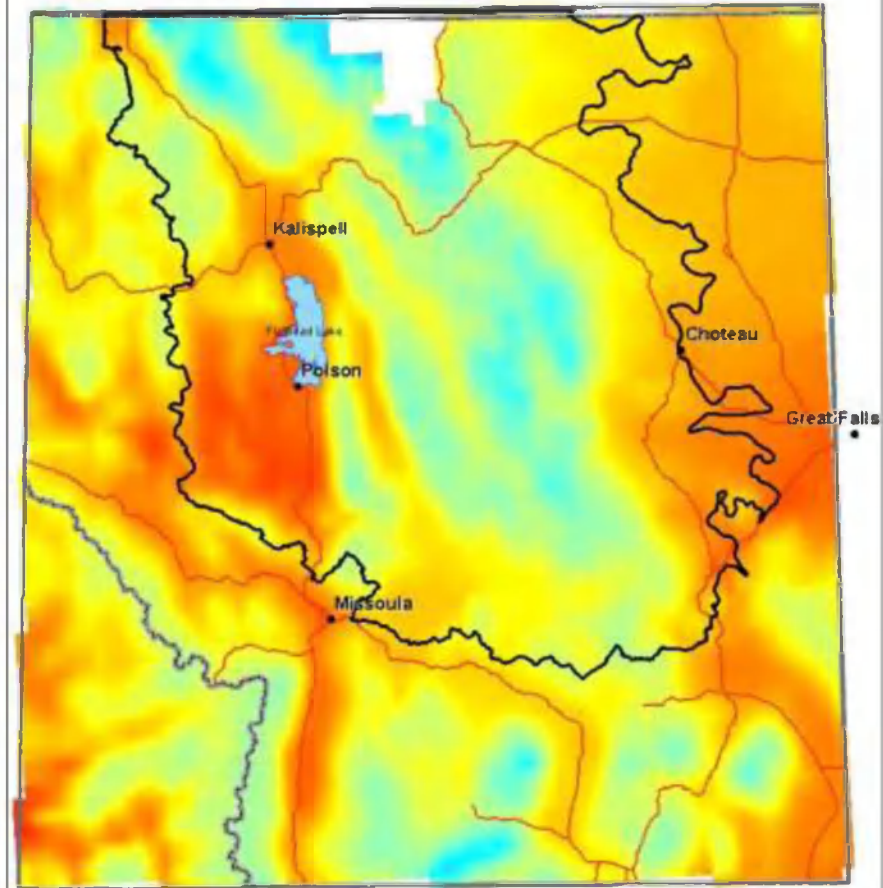
- Combined Flow (Seas.)
- Snow-Water Equivalent
- Snowpack Vulnerability



Historic Average Annual Temperature (1916-2006)



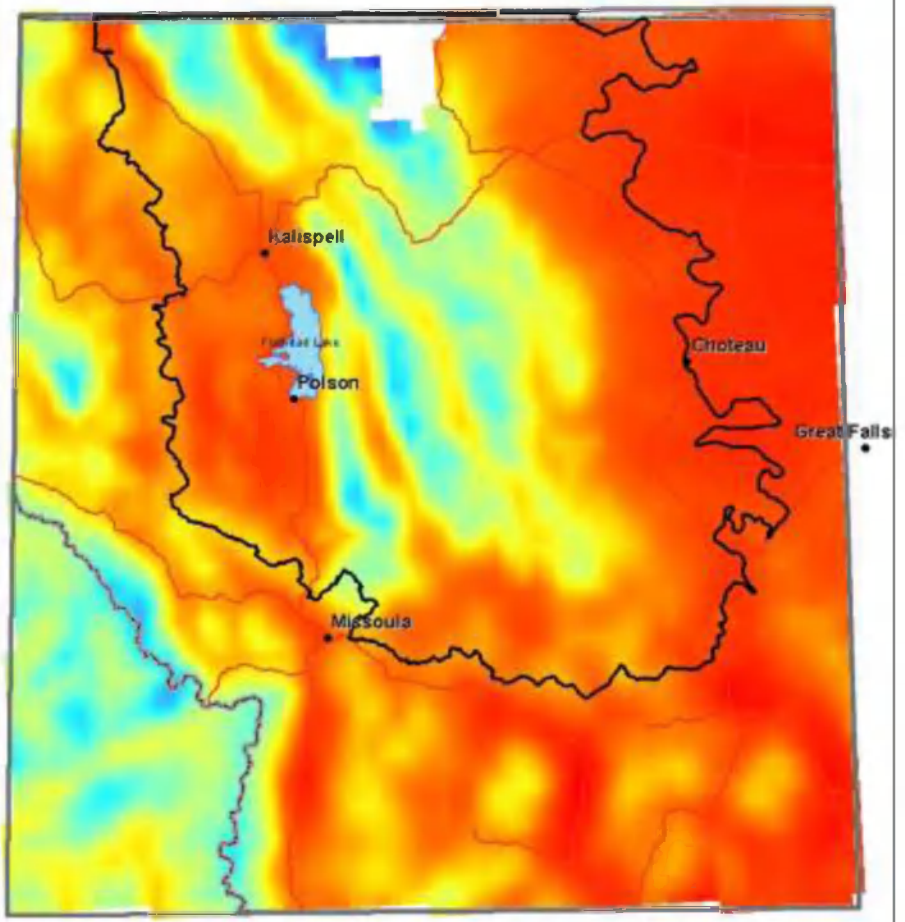
Mid-Century (2030-2059) Ensemble Mean Projected Average Annual Temperature



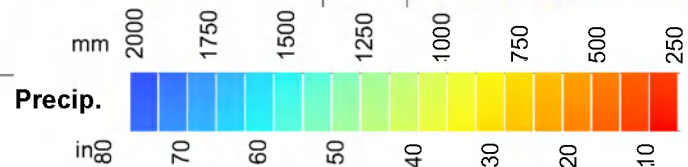
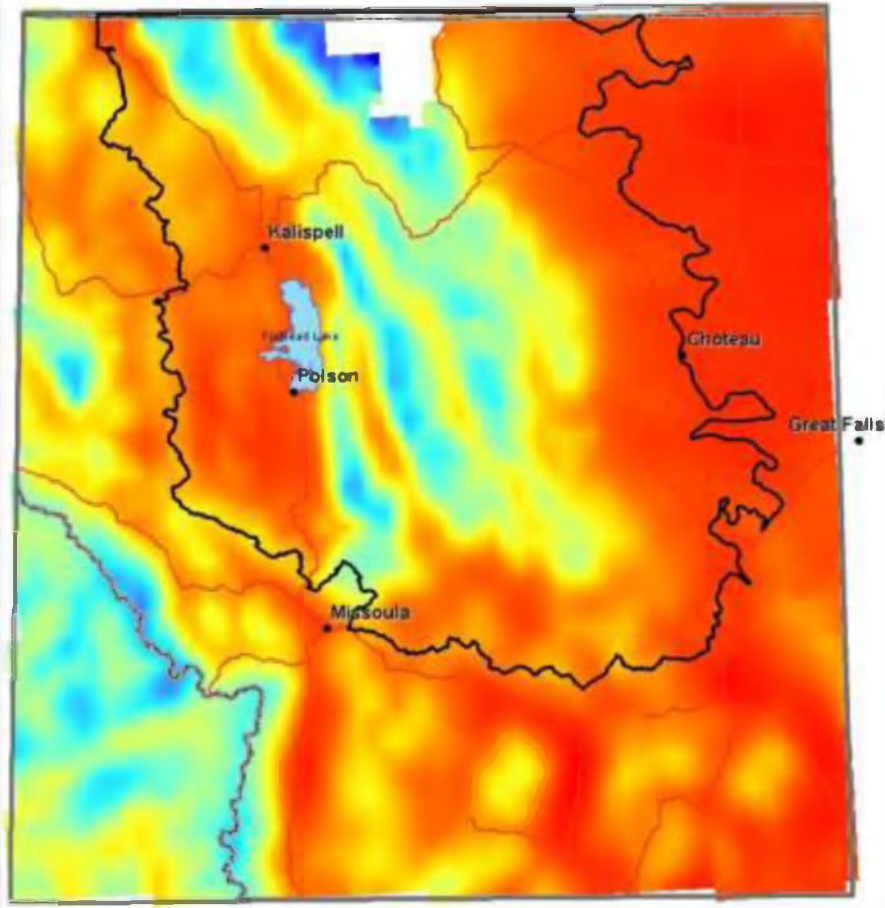
Climate models project increases in surface air temperatures in the COC for the mid-21<sup>st</sup> century.



Historic Average Annual Precipitation (1916-2006)



Mid-Century (2030-2059) Ensemble Mean Projected Average Annual Precipitation

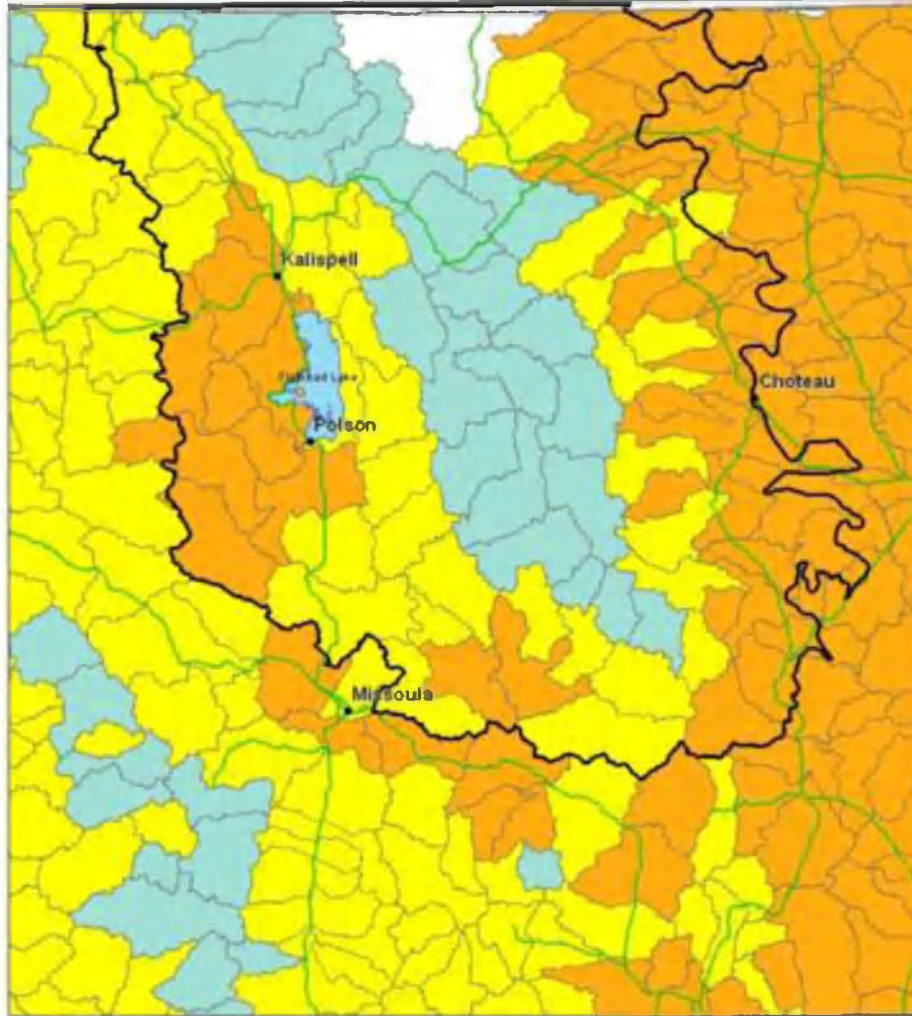


Climate models project increases in average annual precipitation, mainly in mid- to high-elevation areas of the COC.

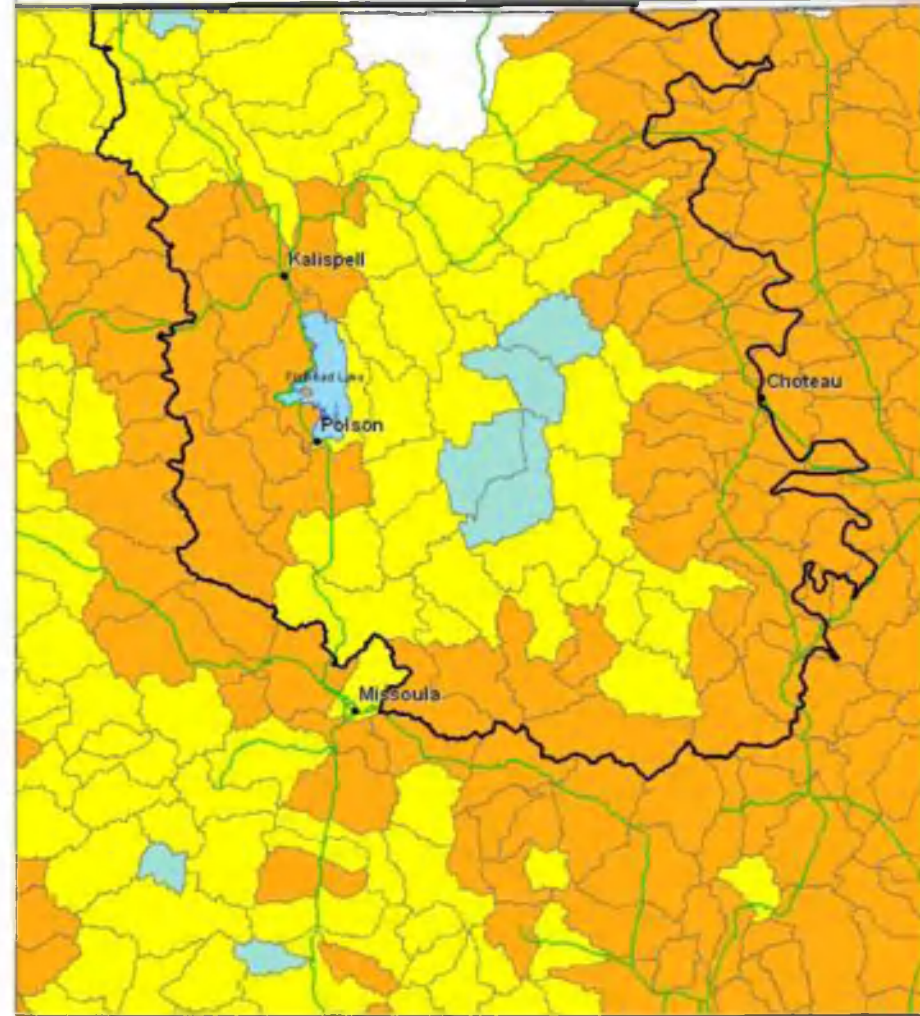







Historic Watershed Snowpack Vulnerability (1916-2006)



Mid-Century Projected Watershed Snowpack Vulnerability (2030-2059)



-  Rainfall Dominant Watersheds
-  Transitional Watersheds
-  Snowmelt Dominant Watersheds

Many transitional watersheds become rain dominant and most (77%) snow dominant watersheds in COC become transitional in the 2040 scenario.



**THANK  
YOU**

**Special Thanks To:**

**Jim Morrison  
Region 1 Forest Service  
Climate Impacts Group**