



ChildMYnder
The Importance of
Onboarding New
Teachers

Hi again! I'm Sara Schreiner.

CEO - The Sunshine Academy and
ChildMYnder





Why Onboarding is so important

01

First 90 Days: It's estimated that up to 20% of employee turnover happens within the first 45 days of employment. Extending that a bit further to the 90-day mark, and you could be looking at nearly 30% of total turnovers, depending on the industry and specific company.

02

Cost of Turnover: The cost of replacing an employee within the first year can range from 50% to 150% of their annual salary when considering recruitment, training, and productivity loss costs. This makes the high turnover within the first 90 days particularly expensive.

03

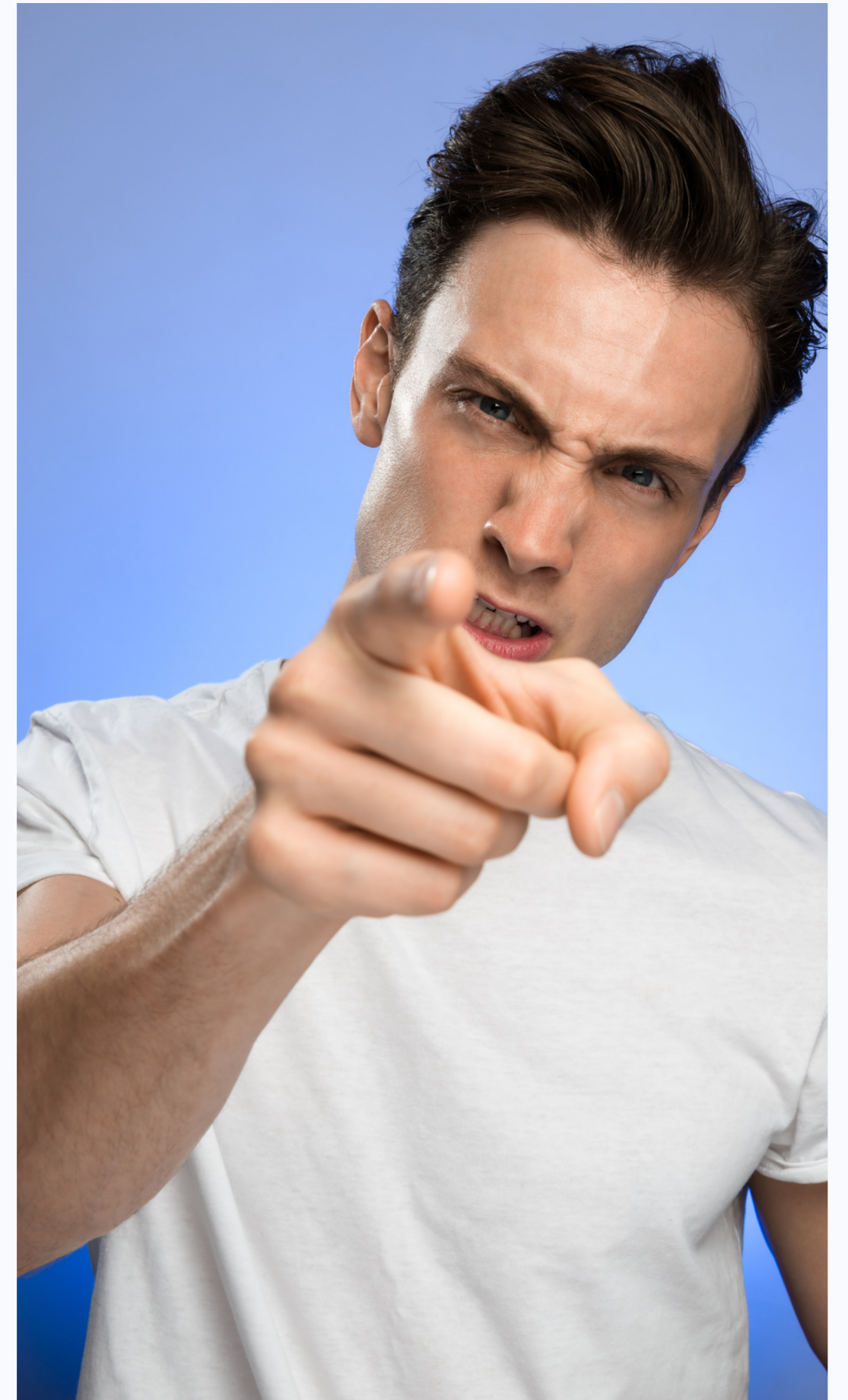
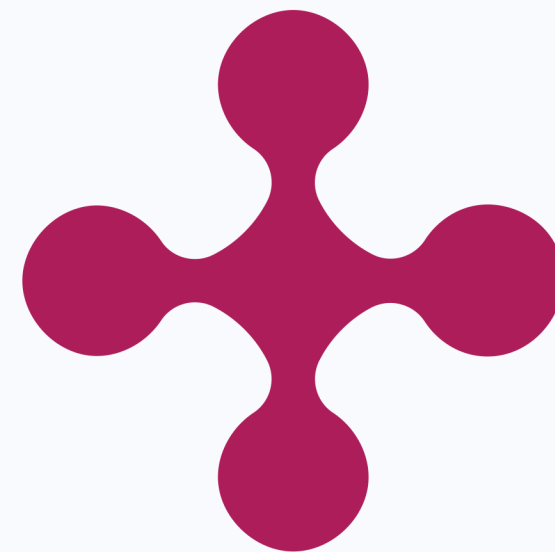
Onboarding Impact: Organizations with a strong onboarding process improve new hire retention by 82% and productivity by over 70%. Conversely, companies with weak onboarding programs lose the confidence of their candidates and are more likely to lose these individuals in the first year.

Why is Onboarding Important?

01 Legal Liabilities

02 Financial Liabilities

03 Reputational Liabilities





Steps to Onboarding

01

Pre-Boarding

02

Onboarding

03

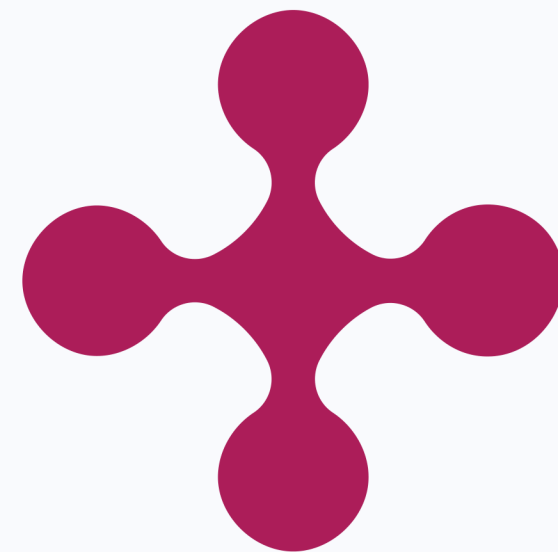
Continued Onboarding

04

Full Integration

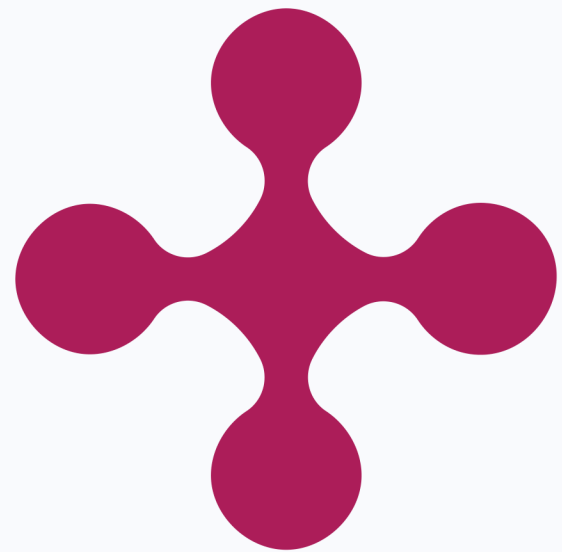
How to automate this process?

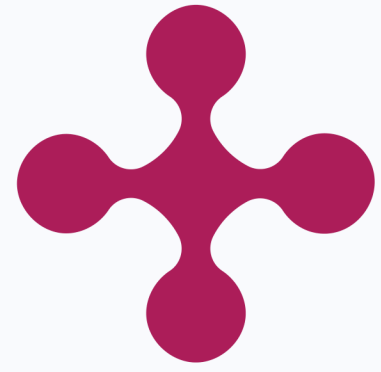
Onboarding needs to be consistent and easy to ensure it's getting done.



First: Create your presentation

Canva - Magic Design





Now Automate/Systematize



bamboohR™



Google Classroom

Benefits of having a Virtual Assistant help you with Onboarding

01 Accountability

02 Consistency

03 Evergreen



Benefits of Joining our Next MasterMYnd Cohort - October 2023

01

Community

02

New Ideas

03

Work Smarter - Not Harder





Thank you!

Contact Information

Sara Schreiner

406-698-7545

sara@childmynder.com

ChildMYnder