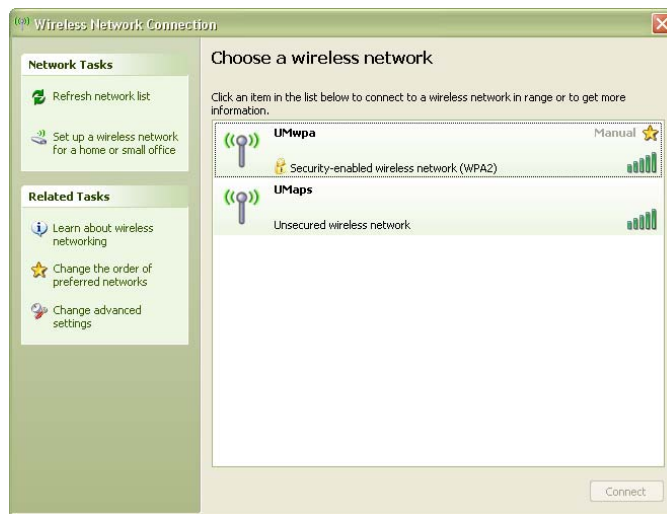


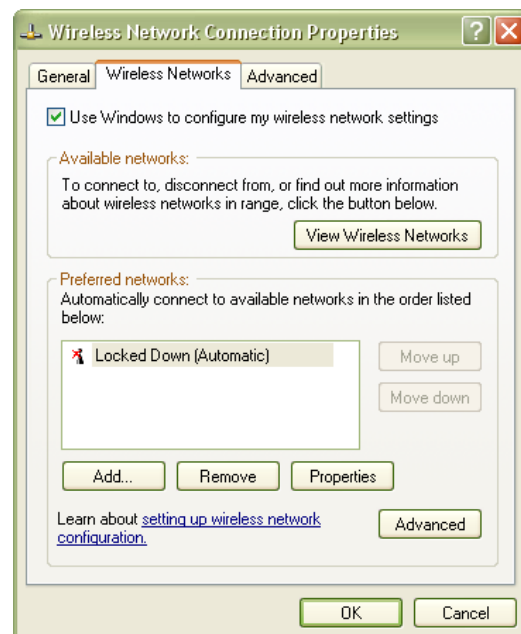
## Configuring Microsoft Windows XP for WPA2 Enterprise: Windows Wireless

**Important note:** Using the **Windows Wireless Client** stores your user name (NetID) and password in the system registry on your computer. When you change your NetID password, a change in the registry will be necessary to clear the old password. Contact IT Central for assistance.

1. In your Control Panel, double click **Network Connections**, then right click on your wireless network card and select **Properties**. The **Wireless Network Connection** dialog box displays. **OR** you may also access **Wireless Network Connection Properties** directly (Step 3) by clicking on the wireless network icon located in your system tray on your desktop (skip Step 2).
2. On the **Wireless Network Connection** dialog box under **Choose a wireless network**, click on **UMwpa**. Under **Related Tasks**, click **Change advanced settings**.

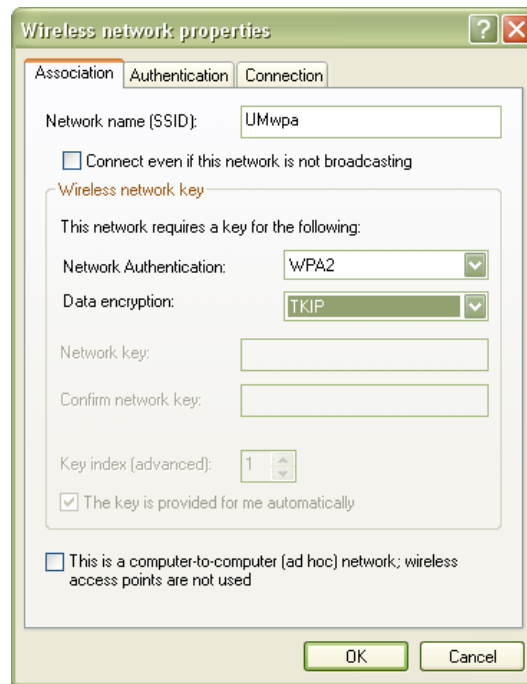


3. The **Wireless Network Connection Properties** dialog box displays.
  - a. Click on the **Wireless Networks** tab. Confirm that "Use Windows to configure my wireless network settings" is checked.
  - b. Click on the **Add** button.



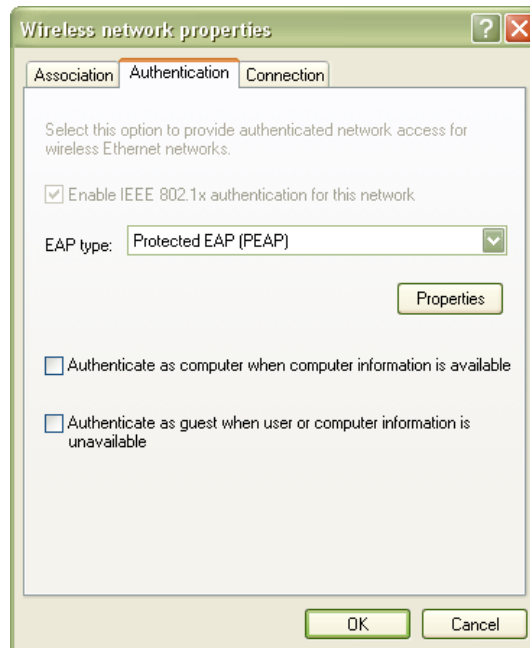
4. The **Wireless network properties** dialog box displays.

- a. Next to **Network Name** type: **wpa**
- b. Under **Wireless network key**, next to **Network Authentication**, select **WPA, WPA Enterprise, or WPA2 Enterprise** (depending on age and hardware)
- c. Next to **Data encryption**, select **TKIP**.



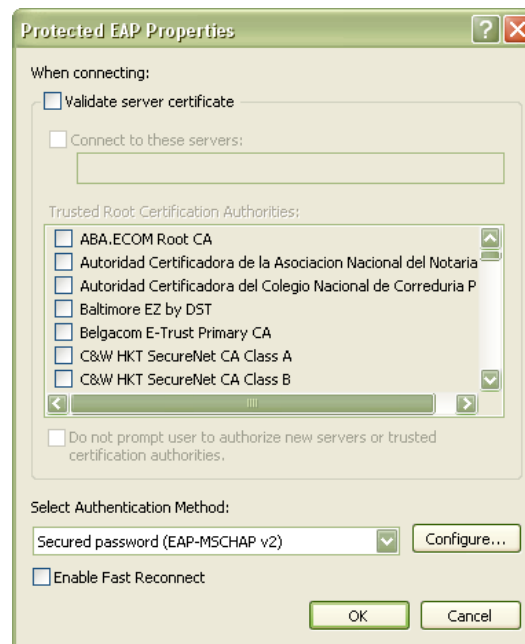
5. Select the **Authentication** tab.

- a. Next to **EAP type**, select **Protected EAP (PEAP)**
- b. Uncheck **Authenticate as computer when computer information is available**.
- c. Click on the **Properties** tab.



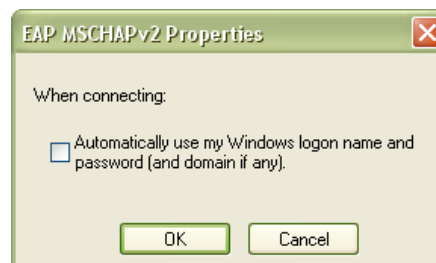
6. The **Protected EAP Properties** dialog box displays.

- a. Uncheck **Validate server certificate**.
- b. Under **Select Authentication Method**, assure that **Secured password (EAP-MSCHAP v2)** is selected.
- c. Confirm that **Enable Fast Reconnect** is unchecked.
- d. Click on the **Configure** button.



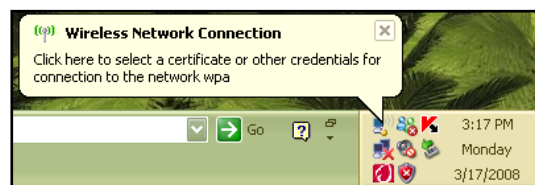
7. The **EAP MSCHAPv2 Properties** dialog box displays.

- a. Uncheck **Automatically use my Windows logon name and password**.
- b. Click **OK**.



- c. Click **OK** on remaining dialog boxes that display to exit out of wireless configuration.

8. If you have successfully completed this process an alert will display from your system tray (next to the time display on your task bar). Click inside the alert to validate your credentials.



9. An **Enter Credentials** dialog box displays.
  - a. Enter your User name (NetID) and password. Do not enter a Logon domain.
  - b. Click **OK**.
  - c. After your credentials successfully authenticate, you will be on the UM wireless network.



10. At any time, you may hover over the wireless connection icon located in your system tray to verify that you are connected.

